


VIRGINIA DEPARTMENT OF TRANSPORTATION
TRAFFIC OPERATIONS DIVISION
INSTRUCTIONAL & INFORMATIONAL MEMORANDUM

GENERAL SUBJECT: Signs	NUMBER: IIM-TOD-398
	SUPERSEDES: N/A
SPECIFIC SUBJECT: Stop for Pedestrians Signs	DATE: July 30, 2023
APPROVAL:	
 <p style="font-size: 2em; margin: 0;">Cole Mark nbp74576</p> <p style="margin: 0;">Digitally signed by Cole Mark nbp74576 Date: 2023.07.30 16:36:05 -04'00'</p>	

1.0 BACKGROUND

Chapter 117 of the 2023 Acts of Assembly, which revised § [46.2-924](#) of the Code of Virginia, changes the requirement that drivers yield to pedestrians to instead require drivers to stop for pedestrians in certain crosswalks.

Notwithstanding the above, subsection C of § [46.2-924](#) continues requires drivers to yield at intersections or crosswalks where the movement of traffic is regulated by law-enforcement officers or traffic control devices, such as movements made under traffic signals per § [46.2-833](#).

This change requires updates to various sections of the Virginia Supplement to the Manual on Uniform Traffic Control Devices, Revision 1 (Virginia Supplement) to remove reference to many, but not all, “Yield for Pedestrians” signs and include content for “Stop for Pedestrians” signs.

These changes are outlined in this IIM.

2.0 EFFECTIVE DATE

This IIM is effective upon release.

3.0 MODIFIED SECTIONS OF THE VIRGINIA SUPPLEMENT

Revised content and sections from the Virginia Supplement are shown below. These include:

- Table 2B-1(VA). Regulatory Sign and Plaque Sizes
- Section 2B.11 – Yield Here to Pedestrian Signs and Stop for Pedestrian Signs (R1-5 Series)
 - Including Figure 2B-2(VA). Unsignalized Pedestrian Crossing Signs
- Section 2B.12 In-Street and Overhead Pedestrian Crossing Signs (R1-6, R1-6a, R1-9, R1-9a)
 - Including Figure 2B-2(VA). Unsignalized Pedestrian Crossing Signs
- Section 2C.50 Non-Vehicular Warning Signs (W11-2, W11-3, W11-4, W11-6, W11-7, W11-9, and W11-16 through W11-22)
- Section 3B.16 Stop and Yield Lines
 - Including Figure 3B-17(VA)
- Table 7B-1 (VA). School Area Sign and Plaque Sizes
- Section 7B.11 School Advance Crossing Assembly
- Section 7B.12 School Crossing Assembly
 - Including Figure 7B-6(VA)

Grey highlighted text indicates either:

- New text to be added to the Virginia Supplement via this IIM.
- Previous strikethrough text that is being restored via this IIM.

Strikethrough text highlighted blue indicates existing text from the Virginia Supplement to be removed via this IIM.

Consistent with previous updates to the Virginia Supplement to the MUTCD, the figures in the following sections do not show highlights where revisions are made.

3.1 - Table 2B-1(VA) Regulatory Sign and Plaque Sizes

Table 2B-1(VA). Regulatory Sign and Plaque Sizes

Sign or Plaque	Sign Designation	Section	Conventional Road		Expressway	Freeway	Minimum	Oversized
			Single Lane	Multi-Lane				
Stop	R1-1	2B.05	30 x 30*	36 x 36	36 x 36	—	30 x 30*	48 x 48
Yield	R1-2	2B.08	36 x 36 x 36*	48 x 48 x 48	48 x 48 x 48	60 x 60 x 60	30 x 30 x 30*	—
To Oncoming Traffic (plaque)	R1-2aP	2B.10	24 x 18	24 x 18	36 x 30	48 x 36	24 x 18	—
All Way (plaque)	R1-3P	2B.05	18 x 6	18 x 6	—	—	—	30 x 12
Yield Here to Peds	R1-5	2B.11	—	36 x 36	—	—	—	36 x 36
Yield Here to Pedestrians	R1-5a	2B.11	—	36 x 48	—	—	—	36 x 48
Stop Here for Peds	R1-5b	2B.11	—	36 x 36	—	—	—	36 x 36
Stop Here for Pedestrians	R1-5c	2B.11	—	36 x 48	—	—	—	36 x 48

Table 2B-1(VA). Regulatory Sign and Plaque Sizes

Sign or Plaque	Sign Designation	Section	Conventional Road		Expressway	Freeway	Minimum	Oversized
			Single Lane	Multi-Lane				
State Law Stop for Pedestrians	R1-V2	2B.11	24 x 36	36 x 48	—	—	—	—
In-Street Ped Crossing	R1-6,6a	2B.12	12 x 36	12 x 36	—	—	—	—
Overhead Ped Crossing	R1-9,9a	2B.12	90 x 24	90 x 24	—	—	—	—
Except Right Turn (plaque)	R1-10P	2B.05	24 x 18	24 x 18	—	—	—	—
Speed Limit	R2-1	2B.13	24 x 30*	30 x 36	36 x 48	48 x 60	18 x 24*	30 x 36
Truck Speed Limit (plaque)	R2-2P	2B.14	24 x 24	24 x 24	36 x 36	48 x 48	—	36 x 36
Night Speed Limit (plaque)	R2-3P	2B.15	24 x 24	24 x 24	36 x 36	48 x 48	—	36 x 36
Minimum Speed Limit (plaque)	R2-4P	2B.16	24 x 30	24 x 30	36 x 48	48 x 60	—	36 x 48
Combined Speed Limit	R2-4a	2B.16	24 x 48	24 x 48	36 x 72	48 x 96	—	36 x 72
Unless Otherwise Posted (plaque)	R2-5P	2B.13	24 x 18	24 x 18	—	—	—	—
Citywide (plaque)	R2-5aP	2B.13	24 x 6	24 x 6	—	—	—	—
Neighborhood (plaque)	R2-5bP	2B.13	24 x 6	24 x 6	—	—	—	—
Residential (plaque)	R2-5cP	2B.13	24 x 6	24 x 6	—	—	—	—
Fines Higher (plaque)	R2-6P	2B.17	24 x 18	24 x 18	36 x 24	48 x 36	—	36 x 24
Fines Double (plaque)	R2-6aP	2B.17	24 x 18	24 x 18	36 x 24	48 x 36	—	36 x 24
\$XX Fine (plaque)	R2-6bP	2B.17	24 x 18	24 x 18	36 x 24	48 x 36	—	36 x 24
Begin Higher Fines Zone	R2-10	2B.17	24 x 30	24 x 30	36 x 48	48 x 60	—	36 x 48
End Higher Fines Zone	R2-11	2B.17	24 x 30	24 x 30	36 x 48	48 x 60	—	36 x 48
Movement Prohibition	R3-1,2,3,4,18,27	2B.18	24 x 24*	36 x 36	36 x 36	—	—	48 x 48
Mandatory Movement Lane Control	R3-5,5a	2B.20	30 x 36	30 x 36	—	—	—	—
Left Lane (plaque)	R3-5bP	2B.20	30 x 12	30 x 12	—	—	—	—
HOV 2+ (plaque)	R3-5cP	2B.20	24 x 12	24 x 12	—	—	—	—
Taxi Lane (plaque)	R3-5dP	2B.20	30 x 12	30 x 12	—	—	—	—
Center Lane (plaque)	R3-5eP	2B.20	30 x 12	30 x 12	—	—	—	—
Right Lane (plaque)	R3-5fP	2B.20	30 x 12	30 x 12	—	—	—	—
Bus Lane (plaque)	R3-5gP	2B.20	30 x 12	30 x 12	—	—	—	—
Optional Movement Lane Control	R3-6	2B.21	30 x 36	30 x 36	—	—	—	—
Right (Left) Lane Must Turn Right (Left)	R3-7	2B.20	30 x 30*	36 x 36	—	—	—	—
Advance Intersection Lane Control	R3-8,8a,8b	2B.22	Varies x 30	Varies x 30	—	—	—	Varies x 36
Two-Way Left Turn Only (overhead)	R3-9a	2B.24	30 x 36	30 x 36	—	—	—	—
Two-Way Left Turn Only (post-mounted)	R3-9b	2B.24	24 x 36	24 x 36	—	—	—	36 x 48

Table 2B-1(VA). Regulatory Sign and Plaque Sizes

Sign or Plaque	Sign Designation	Section	Conventional Road		Expressway	Freeway	Minimum	Oversized
			Single Lane	Multi-Lane				
BEGIN	R3-9cP	2B.25	30 x 12	30 x 12	—	—	—	—
BEGIN	R3-9cP (V)	2B.V3	—	—	48 x 18	48 x 18	—	—
END	R3-9dP	2B.25	30 x 12	30 x 12	—	—	—	—
Reversible Lane Control (symbol)	R3-9e	2B.26	108 x 48	108 x 48	—	—	—	—
Reversible Lane Control (post-mounted)	R3-9f	2B.26	30 x 42*	36 x 54	—	—	—	—
Advance Reversible Lane Control Transition Signing	R3-9g,9h	2B.26	108 x 36	108 x 36	—	—	—	—
End Reverse Lane	R3-9i	2B.26	108 x 48	108 x 48	—	—	—	—
Begin Right (Left) Turn Lane	R3-20	2B.20	24 x 36	24 x 36	—	—	—	—
All Turns (U Turn) from Right Lane	R3-23,23a	2B.27	60 x 36	60 x 36	—	—	—	—
All Turns (U Turn) with arrow	R3-24,24b,25,25b,26a	2B.27	72 x 18	72 x 18	—	—	—	—
U and Left Turns with arrow	R3-24a,25a,26	2B.27	60 x 24	60 x 24	—	—	—	—
Right Lane Must Exit	R3-33	2B.23	—	—	78 x 36	78 x 36	—	—
Do Not Pass	R4-1	2B.28	24 x 30	24 x 30	36 x 48	48 x 60	18 x 24	36 x 48
Pass With Care	R4-2	2B.29	24 x 30	24 x 30	36 x 48	48 x 60	18 x 24	36 x 48
Slower Traffic Keep Right	R4-3	2B.30	24 x 30	24 x 30	36 x 48	48 x 60	18 x 24	36 x 48
Trucks Use Right Lane	R4-5	2B.31	24 x 30	24 x 30	36 x 48	48 x 60	—	36 x 48
Keep Right	R4-7,7a,7b	2B.32	24 x 30	24 x 30	36 x 48	48 x 60	18 x 24	36 x 48
Narrow Keep Right	R4-7c	2B.32	18 x 30	18 x 30	—	—	—	—
Keep Left	R4-8,8a,8b	2B.32	24 x 30	24 x 30	36 x 48	48 x 60	18 x 24	36 x 48
Narrow Keep Left	R4-8c	2B.32	18 x 30	18 x 30	—	—	—	—
Stay in Lane	R4-9	2B.33	24 x 30	24 x 30	36 x 48	48 x 60	18 x 24	36 x 48
Runaway Vehicles Only	R4-10	2B.34	48 x 48	48 x 48	—	—	—	—
Slow Vehicles with XX or More Following Vehicles Must Use Turn-Out	R4-12	2B.35	42 x 24	42 x 24	—	—	—	—
Slow Vehicles Must Use Turn-Out Ahead	R4-13	2B.35	42 x 24	42 x 24	—	—	—	—
Slow Vehicles Must Turn Out	R4-14	2B.35	30 x 42	30 x 42	—	—	—	—
Keep Right Except to Pass	R4-16	2B.30	24 x 30	24 x 30	36 x 48	48 x 60	18 x 24	36 x 48
Do Not Drive on Shoulder	R4-17	2B.36	24 x 30	24 x 30	36 x 48	48 x 60	18 x 24	36 x 48
Do Not Pass on Shoulder	R4-18	2B.36	24 x 30	24 x 30	36 x 48	48 x 60	18 x 24	36 x 48
Do Not Enter	R5-1	2B.37	30 x 30*	36 x 36	36 x 36	48 x 48	—	36 x 36
Wrong Way	R5-1a	2B.38	36 x 24*	42 x 30	36 x 24*	42 x 30	30 x 18*	42 x 30

Table 2B-1(VA). Regulatory Sign and Plaque Sizes

Sign or Plaque	Sign Designation	Section	Conventional Road		Expressway	Freeway	Minimum	Oversized
			Single Lane	Multi-Lane				
No Trucks	R5-2,2a	2B.39	24 x 24	24 x 24	30 x 30	36 x 36	—	36 x 36
No Motor Vehicles	R5-3	2B.39	24 x 24	24 x 24	—	—	24 x 24	—
No Commercial Vehicles	R5-4	2B.39	24 x 30	24 x 30	36 x 48	36 x 48	—	—
No Vehicles with Lugs	R5-5	2B.39	24 x 30	24 x 30	36 x 48	48 x 60	—	—
No Bicycles	R5-6	2B.39	24 x 24	24 x 24	30 x 30	36 x 36	24 x 24	48 x 48
No Non-Motorized Traffic	R5-7	2B.39	30 x 24	30 x 24	42 x 24	48 x 30	—	42 x 24
No Motor-Driven Cycles	R5-8	2B.39	30 x 24	30 x 24	42 x 24	48 x 30	—	42 x 24
No Pedestrians, Bicycles, Motor-Driven Cycles	R5-10a	2B.39	30 x 36	30 x 36	—	—	—	—
No Pedestrians or Bicycles	R5-10b	2B.39	30 x 18	30 x 18	—	—	—	—
No Pedestrians	R5-10c	2B.39	24 x 12	24 x 12	—	—	—	—
Authorized Vehicles Only	R5-11	2B.39	30 x 24	30 x 24	—	—	—	—
AUTHORIZED VEHICLES ONLY	R5-11 (V)	2B.39	36 x 24	36 x 24	36 x 24	36 x 24	—	—
One Way	R6-1	2B.40	36 x 12*	54 x 18	54 x 18	54 x 18	—	54 x 18
One Way	R6-2	2B.40	24 x 30*	30 x 36	36 x 48	48 x 60	18 x 24*	36 x 48
Divided Highway Crossing	R6-3,3a	2B.42	30 x 24	30 x 24	36 x 30	—	—	36 x 30
Roundabout Directional (2 chevrons)	R6-4	2B.43	30 x 24	30 x 24	—	—	—	—
Roundabout Directional (3 chevrons)	R6-4a	2B.43	48 x 24	48 x 24	—	—	—	—
Roundabout Directional (4 chevrons)	R6-4b	2B.43	60 x 24	60 x 24	—	—	—	—
Roundabout Circulation (plaque)	R6-5P	2B.44	30 x 30	30 x 30	—	—	—	—
BEGIN ONE WAY	R6-6	2B.40	24 x 30	30 x 36	—	—	—	—
END ONE WAY	R6-7	2B.40	24 x 30	30 x 36	—	—	—	—
Parking Restrictions	R7-1,2,2a,3,4,5,6,7,8,21,21a,22,23,23a,107,108	2B.46	12 x 18	12 x 18	—	—	—	—
Van Accessible (plaque)	R7-8P	2B.46	18 x 9	18 x 9	—	—	—	—
Fee Station	R7-20	2B.46	24 x 18	24 x 18	—	—	—	—
No Parking (with transit logo)	R7-107a	2B.46	12 x 30	12 x 30	—	—	—	—
No Parking/Restricted Parking (combined sign)	R7-200	2B.46	24 x 18	24 x 18	—	—	—	—
No Parking/Restricted Parking (combined sign)	R7-200a	2B.46	12 x 30	12 x 30	—	—	—	—
Tow Away Zone (plaque)	R7-201P,201aP	2B.46	12 x 6	12 x 6	—	—	—	—
This Side of Sign (plaque)	R7-202P	2B.46	12 x 6	12 x 6	—	—	—	—

Table 2B-1(VA). Regulatory Sign and Plaque Sizes

Sign or Plaque	Sign Designation	Section	Conventional Road		Expressway	Freeway	Minimum	Oversized
			Single Lane	Multi-Lane				
Emergency Snow Route	R7-203	2B.46	18 x 24	18 x 24	—	—	—	24 x 30
No Parking on Pavement	R8-1	2B.46	24 x 30	24 x 30	36 x 48	48 x 60	—	36 x 48
No Parking Except on Shoulder	R8-2	2B.46	24 x 30	24 x 30	36 x 48	48 x 60	—	36 x 48
No Parking (symbol)	R8-3	2B.46	24 x 24*	30 x 30	36 x 36	48 x 48	12 x 12*	36 x 36
No Parking	R8-3a	2B.46	24 x 30	24 x 30	36 x 36	48 x 48	18 x 24	36 x 36
Except Sundays and Holidays (plaque)	R8-3bP	2B.46	24 x 18	24 x 18	—	—	12 x 9	30 x 24
On Pavement (plaque)	R8-3cP	2B.46	24 x 18	24 x 18	—	—	12 x 9	30 x 24
On Bridge (plaque)	R8-3dP	2B.46	24 x 18	24 x 18	—	—	12 x 9	30 x 24
On Tracks (plaque)	R8-3eP	2B.46	12 x 9	12 x 9	—	—	—	30 x 24
Except on Shoulder (plaque)	R8-3fP	2B.46	24 x 18	24 x 18	—	—	12 x 9	30 x 24
Loading Zone (plaque)	R8-3gP	2B.46	24 x 18	24 x 18	—	—	12 x 9	30 x 24
Times of Day (plaque)	R8-3hP	2B.46	24 x 18	24 x 18	—	—	12 x 9	30 x 24
Emergency Parking Only	R8-4	2B.49	30 x 24	30 x 24	30 x 24	48 x 36	—	48 x 36
No Stopping on Pavement	R8-5	2B.46	24 x 30	24 x 30	36 x 48	48 x 60	—	36 x 48
No Stopping Except on Shoulder	R8-6	2B.46	24 x 30	24 x 30	36 x 48	48 x 60	—	36 x 48
Emergency Stopping Only	R8-7	2B.49	30 x 24	30 x 24	48 x 36	48 x 36	—	48 x 36
Walk on Left Facing Traffic	R9-1	2B.50	18 x 24	18 x 24	—	—	—	—
Cross Only at Crosswalks	R9-2	2B.51	12 x 18	12 x 18	—	—	—	—
No Pedestrian Crossing (symbol)	R9-3	2B.51	18 x 18	18 x 18	24 x 24	30 x 30	—	30 x 30
No Pedestrian Crossing	R9-3a	2B.51	12 x 18	12 x 18	—	—	—	—
Use Crosswalk (plaque)	R9-3bP	2B.51	18 x 12	18 x 12	—	—	—	—
No Hitchhiking (symbol)	R9-4	2B.50	18 x 18	18 x 18	—	—	—	24 x 24
No Hitchhiking	R9-4a	2B.50	18 x 24	18 x 24	—	—	12 x 18	—
No Skaters	R9-13	2B.39	18 x 18	18 x 18	24 x 24	30 x 30	—	30 x 30
No Equestrians	R9-14	2B.39	18 x 18	18 x 18	24 x 24	30 x 30	—	30 x 30
Cross Only On Green	R10-1	2B.52	12 x 18	12 x 18	—	—	—	—
Pedestrian Signs and Plaques	R10-2,3,3b,3c,3d,4	2B.52	9 x 12	9 x 12	—	—	—	—
Pedestrian Signs	R10-3a,3e,3f,3g,3h,3i,4a	2B.52	9 x 15	9 x 15	—	—	—	—
Left on Green Arrow Only	R10-5	2B.53	30 x 36	30 x 36	48 x 60	—	24 x 30	48 x 60
Stop Here on Red	R10-6	2B.53	24 x 36	24 x 36	—	—	—	36 x 48

Table 2B-1(VA). Regulatory Sign and Plaque Sizes

Sign or Plaque	Sign Designation	Section	Conventional Road		Expressway	Freeway	Minimum	Oversized
			Single Lane	Multi-Lane				
Stop Here on Red	R10-6a	2B.53	24 x 30	24 x 30	—	—	—	36 x 42
Do Not Block Intersection	R10-7	2B.53	24 x 30	24 x 30	—	—	—	—
Use Lane with Green Arrow	R10-8	2B.53	36 x 42	36 x 42	36 x 42	—	—	60 x 72
Left (Right) Turn Signal	R10-10	2B.53	30 x 36	30 x 36	—	—	—	—
No Turn on Red	R10-11	2B.54	24 x 30*	36 x 48	—	—	—	36 x 48
No Turn on Red	R10-11a	2B.54	30 x 36*	36 x 48	—	—	—	—
No Turn on Red	R10-11b	2B.54	36 x 36	36 x 36	—	—	—	—
No Turn on Red Except From Right Lane	R10-11c	2B.54	30 x 42	30 x 42	—	—	—	—
No Turn on Red From This Lane	R10-11d	2B.54	30 x 42	30 x 42	—	—	—	—
Left Turn Yield on Green	R10-12	2B.53	30 x 36	30 x 36	—	—	—	—
Emergency Signal	R10-13	2B.53	42 x 30	42 x 30	—	—	—	—
Emergency Signal - Stop on Flashing Red	R10-14	2B.53	36 x 42	36 x 42	—	—	—	—
Emergency Signal - Stop on Flashing Red (overhead)	R10-14a	2B.53	60 x 24	60 x 24	—	—	—	—
Stop Here on Flashing Red	R10-14b	2B.53	24 x 36	24 x 36	—	—	—	36 x 48
Turning Vehicles Yield to Peds	R10-15	2B.53	30 x 30	30 x 30	—	—	—	—
U-Turn Yield to Right Turn	R10-16	2B.53	30 x 36	30 x 36	—	—	—	—
Right on Red Arrow After Stop	R10-17a	2B.54	36 x 48	36 x 48	—	—	—	—
Traffic Laws Photo Enforced	R10-18	2B.55	36 x 24	36 x 24	48 x 30	54 x 36	—	54 x 36
Traffic Signal - PHOTO ENFORCED	R10-18a	2B.55	30 x 42	30 x 42	30 x 42	—	—	—
Photo Enforced (symbol plaque)	R10-19P	2B.55	24 x 12	24 x 12	36 x 18	48 x 24	—	48 x 24
Photo Enforced (plaque)	R10-19aP	2B.55	24 x 18	24 x 18	36 x 30	48 x 36	—	48 x 36
MON—FRI (and times) (3 lines) (plaque)	R10-20aP	2B.53	24 x 24	24 x 24	—	—	—	—
SUNDAY (and times) (2 lines) (plaque)	R10-20aP	2B.53	24 x 18	24 x 18	—	—	—	—
Crosswalk, Stop on Red	R10-23	2B.53	24 x 30	24 x 30	—	—	—	—
Pedestrian Signs and Plaques	R10-25	2B.52	9 x 12	9 x 12	—	—	—	—
Left Turn Yield on Flashing Red Arrow After Stop	R10-27	2B.53	30 x 36	30 x 36	—	—	—	—
XX Vehicles Per Green	R10-28	2B.56	24 x 30	24 x 30	—	—	—	—
XX Vehicles Per Green Each Lane	R10-29	2B.56	36 x 24	36 x 24	—	—	—	—
Right Turn on Red Must Yield to U-Turn	R10-30	2B.54	30 x 36	30 x 36	—	—	—	—
At Signal (plaque)	R10-31P	2B.53	24 x 9	24 x 9	—	—	—	—

Table 2B-1(VA). Regulatory Sign and Plaque Sizes

Sign or Plaque	Sign Designation	Section	Conventional Road		Expressway	Freeway	Minimum	Oversized
			Single Lane	Multi-Lane				
Push Button for 2 Seconds for Extra Crossing Time	R10-32P	2B.52	9 x 12	9 x 12	—	—	—	—
Keep Off Median	R11-1	2B.57	24 x 30	24 x 30	—	—	—	—
Road Closed	R11-2	2B.58	48 x 30	48 x 30	—	—	—	—
Road Closed - Local Traffic Only	R11-3a,3b,4	2B.58	60 x 30	60 x 30	—	—	—	—
Weight Limit	R12-1,2	2B.59	24 x 30	24 x 30	36 x 48	—	—	36 x 48
Weight Limit	R12-3	2B.59	24 x 36	24 x 36	—	—	—	—
Weight Limit	R12-4	2B.59	36 x 24	36 x 24	—	—	—	—
Weight Limit	R12-5	2B.59	24 x 36	24 x 36	36 x 48	48 x 60	—	—
WEIGHT LIMIT Symbol	R12-V1	2B.59	24 x 30	30 x 36	36 x 42	48 x 54	—	—
Weigh Station	R13-1	2B.60	72 x 54	72 x 54	96 x 72	120 x 90	—	—
Truck Route	R14-1	2B.61	24 x 18	24 x 18	—	—	—	—
Hazardous Material	R14-2,3	2B.62	24 x 24	24 x 24	30 x 30	36 x 36	—	42 x 42
National Network	R14-4,5	2B.63	30 x 30	30 x 30	36 x 36	36 x 36	—	42 x 42
Fender Bender Move Vehicles	R16-4	2B.65	36 x 24	36 x 24 48 x 36	48 x 36 60 x 48	60 x 48	—	48 x 36
FENDER BENDER MOVE VEHICLES	R16-4 (V)	2B.65	—	—	—	120 x 60	—	—
Lights On When Using Wipers or Raining	R16-5,6	2B.64	24 x 30	24 x 30	36 x 48	48 x 60	—	36 x 48
Turn On Headlights Next XX Miles	R16-7	2B.64	48 x 15	48 x 15	72 x 24	96 x 30	—	72 x 24
Turn On, Check Headlights	R16-8,9	2B.64	30 x 15	30 x 15	48 x 24	60 x 30	—	48 x 24
Begin, End Daytime Headlight Section	R16-10,11	2B.64	48 x 15	48 x 15	72 x 24	96 x 30	—	72 x 24
—								
NO DUMPING	R0-V1	2B.V1	24 x 24	24 x 24	—	—	—	—
LITTERING IS ILLEGAL	R0-V2	2B.V1	30 x 30	36 x 36	48 x 48	48 x 48	—	—
SPEED CHECKED BY RADAR AND OTHER ELECTRICAL DEVICES	R0-V3	2B.V2	54 x 30	96 x 42	126 x 54	126 x 54	—	—
RADAR DETECTORS ILLEGAL	R0-V4	2B.V2	54 x 36	54 x 36	72 x 48	72 x 48	—	—
HIGHWAY SAFETY CORRIDOR FINES	R0-V5	2B.V3	120 x 48	120 x 48	180 x 72	180 x 72	—	—
END HIGHWAY SAFETY CORRIDOR	R0-V6	2B.V3	72 x 24	72 x 24	144 x 48	144 x 48	—	—
SPEED LIMIT ENFORCED BY AIRCRAFT	R0-V7	2B.V2	—	—	90 x 54	90 x 54	—	—
TRUCKS-BUSES ALL TOWED VEHICLES CARS ONLY Rest Area Sign	R0-V8	2B.V4	—	—	114 x 36	114 x 36	—	—
END XX MILE SPEED	R2-V2	2B.13	24 x 30	30 x 36	—	—	—	—

Table 2B-1(VA). Regulatory Sign and Plaque Sizes

Sign or Plaque	Sign Designation	Section	Conventional Road		Expressway	Freeway	Minimum	Oversized
			Single Lane	Multi-Lane				
TOWED VEHICLES Speed Limit (plaque)	R2-VP1	2B.V5	24 x 30	30 x 36	36 x 48	48 x 60	—	—
Optional U-Turn/Left Turn	R3-V1	2B.21	30 x 36	30 x 36	—	—	—	—
COMMERCIAL VEHICLES EXCEPT BUSES USE RIGHT LANE WHEN OPERATED XX MPH OR BELOW	R4-V1	2B.V7	—	144 x 84	144 x 84	144 x 84	—	—
COMMERCIAL VEHICLES EXCEPT BUSES PROHIBITED IN LEFT LANE	R4-V2	2B.V7	—	90 x 48	144 x 72	144 x 72	—	—
COMMERCIAL VEHICLES EXCEPT BUSES PROHIBITED IN LEFT LANE (Reduced Width)	R4-V2a	2B.V7	—	60 x 54	108 x 84	108 x 84	—	—
END COMMERCIAL VEHICLE RESTRICTION	R4-V3	2B.V7	—	108 x 48	108 x 48	108 x 48	—	—
TRUCKS AND COMBINATION VEHICLES USE RIGHT LANE WHEN OPERATED BELOW XX MPH	R4-V4	2B.V7	—	144 x 84	144 x 84	144 x 84	—	—
NO PEDESTRIANS, BICYCLES, MOPEDS, ANIMALS, SELF-PROPELLED MACHINERY OR EQUIPMENT	R5-V2	2B.39	—	—	36 x 48	36 x 48	—	—
STATE POLICE PARKING ONLY	R7-V1	2B.46	24 x 30	24 x 30	24 x 30	24 x 30	—	—
TOW-AWAY ZONE PENALTY \$100-\$500 FINE (plaque)	R7-VP1	2B.46	12 x 9	12 x 9	—	—	—	—
UNATTENDED VEHICLES SUBJECT TO TOWING AT OWNER'S EXPENSE (plaque)	R8-VP1	2B.49	48 x 24	48 x 24	48 x 24	48 x 24	—	—
NO FISHING FROM BRIDGE	R9-V1	2B.V6	18 x 24	18 x 24	—	—	—	—
Pedestrian Swing Bridge	R9-V2	2B.V8	—	—	—	—	12 x 18	—
LEFT TURN YIELD ON FLASHING YELLOW ARROW	R10-V1	2B.53	36 x 42	36 x 42	36 x 42	—	30 x 30	—
BRIDGE (plaque)	R12-VP1	2B.59	24 x 12	30 x 15	36 x 18	36 x 18	—	—

* See Table 9B-1(VA) in this Supplement for minimum size required for signs on bicycle facilities

Notes:

1. Larger signs may be used when appropriate
2. Dimensions in inches are shown as width x height

3.2 - Section 2B.11 – Yield Here to Pedestrians Signs and Stop Here for Pedestrians Signs (R1-5 Series)

Revise Section 2B.11 as shown below:

Support:

- 01 The Code of Virginia § 46.2-924 requires that drivers at crosswalks stop for ~~yield the right-of-way to~~ pedestrians crossing the highway except at intersections and crosswalks where the movement of traffic is being regulated by law-enforcement officers or traffic control devices – the driver shall yield according to the law-enforcement officer or traffic control device at such locations. Refer to Section 2B.53 in this Supplement for signs used at traffic signals, including the TURNING VEHICLES YIELD TO PEDESTRIANS (R10-15) sign. The Standard statement in Section 2B.11 of the National MUTCD permits the use of the Stop Here for Pedestrians (R1-5b and R1-5c) signs only if state law specifically requires the driver to stop for a pedestrian in a crosswalk. As The Code of Virginia ~~does not require~~ requires a driver to stop, the ~~R1-5b and R1-5c~~ R1-5 and R1-5a signs are not used in Virginia.

Standard:

- 02 ~~Stop Here for Pedestrians (R1-5b or R1-5c)~~ ~~Yield Here To Pedestrians (R1-5 or R1-5a)~~ signs (see Figure 2B-2(VA) in this Supplement) shall be used if ~~yield~~ stop lines are used in advance of a marked crosswalk that crosses an uncontrolled multi-lane approach. ~~The Yield Here To Pedestrians (R1-5 and R1-5a)~~ ~~Stop Here for Pedestrians (R1-5b and R1-5c)~~ signs shall not be used in Virginia. The legend STATE LAW may be displayed at the top of the ~~R1-6~~ R1-6a and ~~R1-9~~ R1-9a signs.

Guidance:

- 03 ~~If yield lines and Yield Here To Pedestrians signs~~ ~~If stop lines and Stop Here For Pedestrians signs~~ are used in advance of a crosswalk that crosses an uncontrolled multi-lane approach, they should be placed 20 to 50 feet in advance of the nearest crosswalk line (see Section 3B.16 and Figure 3B-17(VA) in this Supplement), and parking should be prohibited in the area between the ~~yield (stop)~~ line and the crosswalk.
- 04 ~~Yield lines and Yield Here To Pedestrians~~ ~~Stop lines and Stop Here For Pedestrians~~ signs should not be used in advance of crosswalks that cross an approach to or departure from a roundabout.

Option:

- 05 ~~Yield Here to Pedestrians~~ ~~Stop Here For Pedestrians~~ signs may be used in advance of a crosswalk that crosses an uncontrolled multi-lane approach to indicate to road users where to ~~stop even if stop lines~~ ~~yield even if yield lines~~ are not used.
- 06 A Pedestrian Crossing (W11-2) warning sign may be placed overhead or may be post-mounted with a diagonal downward pointing arrow (W16-7P) plaque at the crosswalk location where ~~Stop Here For~~ ~~Yield Here To~~ Pedestrians signs have been installed in advance of the crosswalk.

Standard:

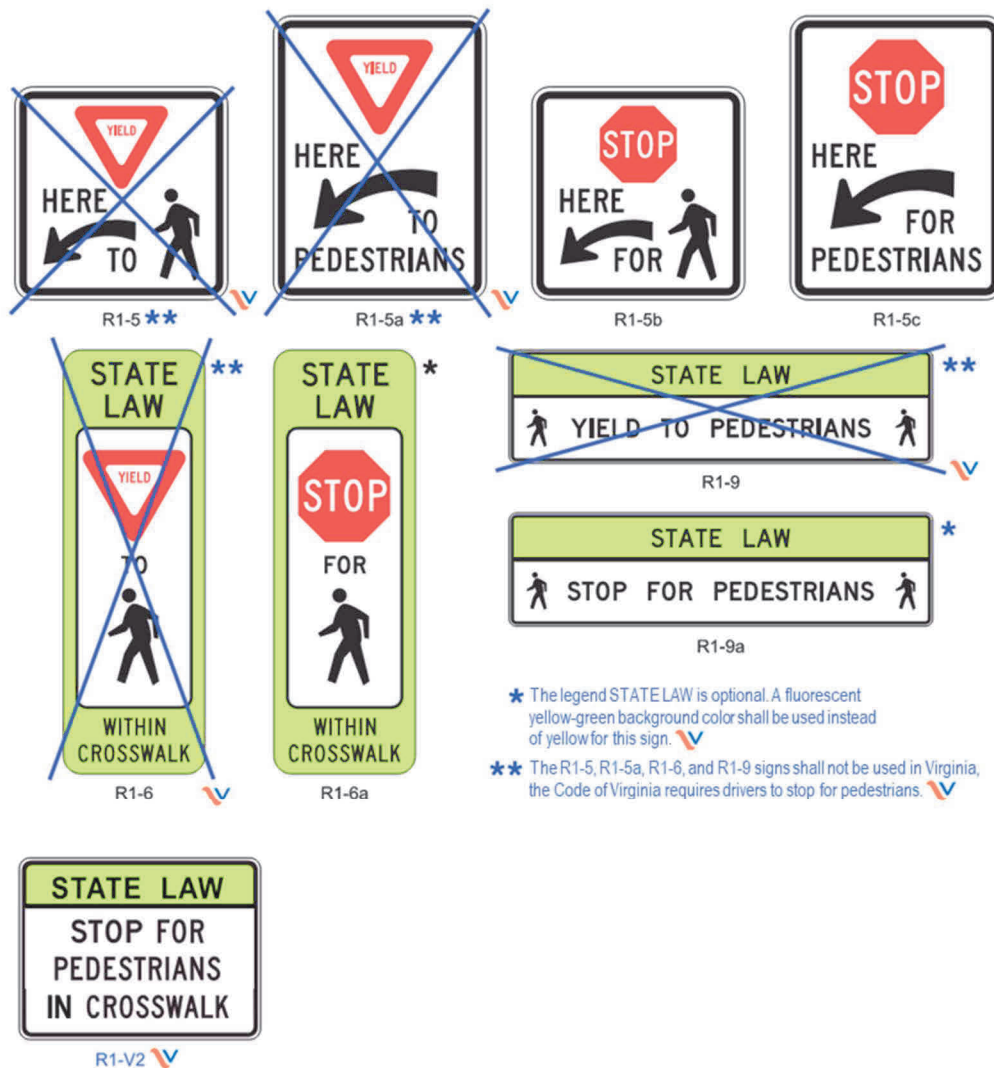
- 07 If a W11-2 sign has been post-mounted at the crosswalk location where a ~~Stop Here For Pedestrians~~ ~~Yield Here To Pedestrians~~ sign is used on the approach, the ~~Stop Here For Pedestrians~~ ~~Yield Here To Pedestrians~~ sign shall not be placed on the same post as or block the road user's view of the W11-2 sign.



Option:

- 08 An advance Pedestrian Crossing (W11-2) warning sign with an AHEAD or a distance supplemental plaque may be used in conjunction with a **Stop Here For Pedestrians** sign on the approach to the same crosswalk.
- 09 In-Street Pedestrian Crossing signs and **Stop Here For Yield Here To Pedestrians** signs may be used together at the same crosswalk.
- 10 A State Law Stop for Pedestrians (R1-V2) sign may be placed in advance of crosswalk.
- 11 Where a crosswalk is located in close proximity to a downstream YIELD (R1-2) sign, such that use of an R1-5b sign, which shows a stop symbol, may create confusion for a driver seeing both YIELD and stop symbol messages simultaneously, a State Law Stop For Pedestrians (R1-V2) sign may be utilized upstream of the crosswalk.

Figure 2B-2(VA). Unsignalized Pedestrian Crossing Signs



3.3 - Section 2B.12 In-Street and Overhead Pedestrian Crossing Signs (R1-6, R1-6a, R1-9, R1-9a)

Revise Section 2B.12 as shown below:



Option:

- 01 The In-Street Pedestrian Crossing ~~(R1-6)~~ (R1-6a) sign (see Figure 2B-2(VA) in this Supplement) or the Overhead Pedestrian Crossing ~~(R1-9)~~ (R1-9a) sign (see Figure 2B-2(VA) in this Supplement) may be used to remind road users of laws regarding right-of-way at an unsignalized pedestrian crosswalk. The legend STATE LAW may be displayed at the top of the ~~R1-6~~ R1-6a and R1-9a ~~R1-9~~ signs.

Support:

- 02 The Code of Virginia § 46.2-924 requires that drivers at crosswalks stop for ~~yield the right-of-way to~~ pedestrians crossing the highway except at intersections and crosswalks where the movement of traffic is being regulated by law-enforcement officers or traffic control devices – the driver shall yield according to the law-enforcement officer or traffic control device at such locations. Refer to Section 2B.53 in this Supplement for signs used at traffic signals, including the TURNING VEHICLES YIELD TO PEDESTRIANS (R10-15) sign. The Standard statement in Section 2B.12 of the National MUTCD permits the use of the Stop for Pedestrians (R1-6a and R1-9a) signs only if state law specifically requires the driver to stop for a pedestrian in a crosswalk. As The Code of Virginia ~~does not require~~ requires a driver to stop, the ~~R1-6a and R1-9a~~ R1-6 and R1-9 signs are not used in Virginia.

Standard:

- 03 ~~The Stop For Yield To Pedestrians In-Street Pedestrian Crossing (R1-6) (R1-6a) and Yield To Stop for Pedestrians Overhead Pedestrian Crossing (R1-9) (R1-9a) signs shall not be used in Virginia.~~

Option:

- 04 On the ~~R1-6~~ R1-6a sign, the legend ~~STOP~~ YIELD may be used instead of the appropriate ~~STOP~~ YIELD sign symbol.
- 05 Highway agencies may develop and apply criteria for determining the applicability of In-Street Pedestrian Crossing signs.

Standard:

- 06 **If used, the In-Street Pedestrian Crossing sign shall be placed in the roadway at the crosswalk location on the center line, on a lane line, or on a median island. The In-Street Pedestrian Crossing sign shall not be post-mounted on the left-hand or right-hand side of the roadway.**
- 07 **If used, the Overhead Pedestrian Crossing sign shall be placed over the roadway at the crosswalk location.**
- 08 **An In-Street or Overhead Pedestrian Crossing sign shall not be placed in advance of the crosswalk to educate road users about the State law prior to reaching the crosswalk, nor shall it be installed as an educational display that is not near any crosswalk.**

Guidance:

- 09 *If an island (see Chapter 3I) is available, the In-Street Pedestrian Crossing sign, if used, should be placed on the island.*

Option:

- 10 If a Pedestrian Crossing (W11-2) warning sign is used in combination with an In-Street or an Overhead Pedestrian Crossing sign, the W11-2 sign with a diagonal downward pointing arrow (W16-7P) plaque may be post-mounted on the right-hand side of the roadway at the crosswalk location.

Standard:

- 11 **The In-Street Pedestrian Crossing sign and the Overhead Pedestrian Crossing sign shall not be used at signalized locations.**

- 12 **The In-Street Pedestrian Crossing sign shall have a black legend (except for the red **YIELD** **STOP** sign symbols) and border on a white background, surrounded by an outer **yellow-or** fluorescent yellow-green background area (see [Figure 2B-2\(VA\) in this Supplement](#)). The Overhead Pedestrian Crossing sign shall have a black legend and border on a **yellow-or** fluorescent yellow-green background at the top of the sign and a black legend and border on a white background at the bottom of the sign (see [Figure 2B-2\(VA\) in this Supplement](#)).**

- 13 **Unless the In-Street Pedestrian Crossing sign is placed on a physical island, the sign support shall be designed to bend over and then bounce back to its normal vertical position when struck by a vehicle.**

Support:

- 14 The Provisions of [Section 2A.18 of this Supplement](#) concerning mounting height are not applicable for the In-Street Pedestrian Crossing sign.

Standard:

- 15 **The top of an In-Street Pedestrian Crossing sign shall be a maximum of 4 feet above the pavement surface. The top of an In-Street Pedestrian Crossing sign placed in an island shall be a maximum of 4 feet above the island surface.**

Option:

- 16 The In-Street Pedestrian Crossing sign may be used seasonally to prevent damage in winter because of plowing operations, and may be removed at night if the pedestrian activity at night is minimal.

- 17 In-Street Pedestrian Crossing signs, Overhead Pedestrian Crossing signs, and **Stop Here For Yield Here To** Pedestrians signs may be used together at the same crosswalk.

3.4 - Section 2C.50 Non-Vehicular Warning Signs (W11-2, W11-3, W11-4, W11-6, W11-7, W11-9, and W11-16 through W11-22)

Revise Section 2C.50 as shown below:

Option:

- 01 Non-Vehicular Warning (W11-2, W11-3, W11-4, W11-6, W11-7, W11-9, and W11-16 through W11-22) signs (see [Figure 2C-11\(VA\) in this Supplement](#)) may be used to alert road users in advance of locations where unexpected entries into the roadway might occur or where shared use of the roadway by pedestrians, animals, or equestrians might occur.

Support:

- 02 These conflicts might be relatively confined, or might occur randomly over a segment of roadway.

Guidance:

- 03 *If used in advance of a pedestrian, snowmobile, or equestrian crossing, the W11-2, W11-6, W11-7, and W11-9 signs should be supplemented with plaques (see [Section 2C.55 of the MUTCD](#)) with the legend AHEAD or XX FEET to inform road users that they are approaching a point where crossing activity might occur.*

Standard:

- 04 **If a post-mounted W11-2, W11-6, W11-7, or W11-9 sign is placed at the location of the crossing point where pedestrians, snowmobilers, or equestrians might be crossing the roadway, a diagonal downward pointing arrow (W16-7P) plaque (see [Figure 2C-12](#)) shall be mounted below the sign. If the W11-2, W11-6, W11-7, or W11-9 sign is mounted overhead, the W16-7P plaque shall not be used.**

Option:

- 05 A Pedestrian Crossing (W11-2) sign may be placed overhead or may be post-mounted with a diagonal downward pointing arrow (W16-7P) plaque at the crosswalk location where [Stop Here For Yield Here To Pedestrians](#) signs (see [Section 2B.11 of this Supplement](#)) have been installed in advance of the crosswalk.

Standard:

- 06 **If a W11-2 sign has been post-mounted at the crosswalk location where a [Stop Here For Yield Here To Pedestrians](#) sign is used on the approach, the [Stop Here For Yield Here To Pedestrians](#) sign shall not be placed on the same post as or block the road user's view of the W11-2 sign.**

Option:

- 07 An advance Pedestrian Crossing (W11-2) sign with an AHEAD or a distance supplemental plaque may be used in conjunction with a [Stop Here For Yield Here To Pedestrians](#) sign on the approach to the same crosswalk.

Support:

- 08 The Code of Virginia § 46.2-924 requires that drivers at crosswalks [stop for yield the right-of-way to pedestrians crossing the highway except at intersections and crosswalks where the movement of traffic is being regulated by law-enforcement officers or traffic control devices – the driver shall yield according to the law-enforcement officer or traffic control device at](#)



such locations. Refer to Section 2B.53 in this Supplement for signs used at traffic signals, including the TURNING VEHICLES YIELD TO PEDESTRIANS (R10-15) sign. The Standard statement in Section 2B.11 of the National MUTCD permits the use of the Stop Here for Pedestrians (R1-5b and R1-5c) signs only if state law specifically requires the driver to stop for a pedestrian in a crosswalk. As The Code of Virginia ~~does not require~~ requires a driver to stop, the ~~R1-5b and R1-5c~~ R1-5 and R1-5a signs cannot be utilized.

Option:

- 09 The crossing location identified by a W11-2, W11-6, W11-7, or W11-9 sign may be defined with crosswalk markings (see Section 3B.18 of this Supplement).

Standard:

- 10 **The W11-2 and W11-9 signs and their related supplemental plaques shall have a fluorescent yellow-green background with a black legend and border.**

Guidance:

- 11 ~~When a fluorescent yellow-green background is used, a systematic approach featuring one background color within a zone or area should be used. The mixing of standard yellow and fluorescent yellow-green backgrounds within a selected site area should be avoided.~~

Option:

- 12 A Warning Beacon (see Section 4L.03 of the MUTCD) may be used with any Non-Vehicular Warning sign to indicate specific periods when the condition or activity is present or is likely to be present, or to provide enhanced sign conspicuity.
- 13 A supplemental WHEN FLASHING (W16-13P) plaque (see Figure 2C-12) may be used with any Non-Vehicular Warning sign that is supplemented with a Warning Beacon to indicate specific periods when the condition or activity is present or is likely to be present.

3.5 - Section 3B.16 Stop and Yield Lines

Revise Section 3B.16 as shown below:

Guidance:

- 01 *Stop lines should be used to indicate the point behind which vehicles are required to stop in compliance with a traffic control signal.*

Option:

- 02 Stop lines may be used to indicate the point behind which vehicles are required to stop in compliance with a STOP (R1-1) sign, a Stop Here For Pedestrians (R1-5b or R1-5c) sign, or some other traffic control device that requires vehicles to stop, except YIELD signs that are not associated with passive grade crossings.

Support:

- 03 The Code of Virginia § 46.2-924 requires that drivers at crosswalks ~~stop for~~ yield the right-of-way to pedestrians crossing the roadway except at intersections and crosswalks where the movement of traffic is being regulated by law-enforcement officers or traffic control devices – the driver shall yield according to the law-enforcement officer or traffic control device at

such locations. Refer to Section 2B.53 in this Supplement for signs used at traffic signals, including the TURNING VEHICLES YIELD TO PEDESTRIANS (R10-15) sign. The Standard statement in Section 2B.11 of the National MUTCD permits the use of the Stop Here for Pedestrians (R1-5b and R1-5c) signs ~~only~~ if state law specifically requires the driver to stop for a pedestrian in a crosswalk. As The Code of Virginia ~~does not require~~ requires a driver to stop, the ~~R1-5b and R1-5c~~ R1-5 and R1-5a signs are not used in Virginia.

Option:

- 04 Yield lines may be used to indicate the point behind which vehicles are required to yield in compliance with a YIELD (R1-2) sign ~~or a Yield Here To Pedestrians (R1-5 or R1-5a) sign.~~

Standard:

- 05 **Except as provided in Section 8B.28 of the MUTCD, stop lines shall not be used at locations where drivers are required to yield in compliance with a YIELD (R1-2) sign ~~or a Yield Here To Pedestrians (R1-5 or R1-5a) sign or at locations on uncontrolled approaches where drivers are required by State law to yield to pedestrians.~~**
- 06 Yield lines shall not be used at locations where drivers are required to stop in compliance with a STOP (R1-1) sign, **a Stop Here For Pedestrians (R1-5b or R1-5c) sign**, a traffic control signal, or some other traffic control device.
- 07 **Stop lines shall consist of solid white lines extending across approach lanes to indicate the point at which the stop is intended or required to be made.**
- 08 **Yield lines (see Figure 3B-16) shall consist of a row of solid white isosceles triangles pointing toward approaching vehicles extending across approach lanes to indicate the point at which the yield is intended or required to be made.**
- 09 **Stop lines shall be 24 inches wide.**

Guidance:

- 10 *The individual triangles comprising the yield line should have a base of 12 to 24 inches wide and a height equal to 1.5 times the base. The space between the triangles should be 3 to 12 inches.*

Standard:

- 11 **If used, stop and yield lines shall be placed a minimum of 4 feet in advance of the nearest crosswalk line at controlled intersections, except for yield lines at roundabouts as provided for in Section 3C.04 of the MUTCD and at midblock crosswalks. In the absence of a marked crosswalk, the stop line or yield line shall be placed at the desired stopping or yielding point, but shall not be placed more than 30 feet or less than 8 feet from the nearest edge of the intersecting traveled way.**

Guidance:

- 12 *Stop lines at midblock signalized locations should be placed at least 40 feet in advance of the nearest signal indication (see Section 4D.14 of the MUTCD).*
- 13 *If yield or stop lines are used at a crosswalk that crosses an uncontrolled multi-lane approach, the yield lines or stop lines should be placed 20 to 50 feet in advance of the nearest crosswalk line, and parking should be prohibited in the area between the yield or stop line and the crosswalk (see Figure 3B-17(VA) in this Supplement).*



Standard:

- 14 If yield (stop) lines are used at a crosswalk that crosses an uncontrolled multi-lane approach, Yield Here To (Stop Here For) Pedestrians (R1-5 series) signs (see Section 2B.11 of this Supplement) shall be used.

Guidance:

- 15 Yield (stop) lines and Yield Here To (Stop Here For) Pedestrians signs should not be used in advance of crosswalks that cross an approach to or departure from a roundabout.

Support:

- 16 When drivers yield or stop too close to crosswalks that cross uncontrolled multi-lane approaches, they place pedestrians at risk by blocking other drivers' views of pedestrians and by blocking pedestrians' views of vehicles approaching in the other lanes.

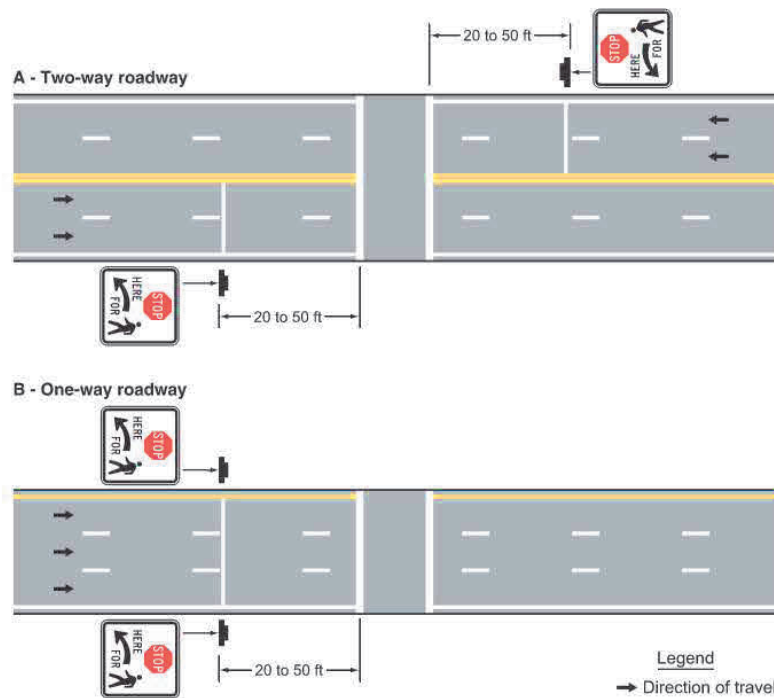
Option:

- 17 Stop and yield lines may be staggered longitudinally on a lane-by-lane basis (see Drawing D of Figure 3B-13(VA) in this Supplement).

Support:

- 18 Staggered stop lines and staggered yield lines can improve the driver's view of pedestrians, provide better sight distance for turning vehicles, and increase the turning radius for left-turning vehicles.
- 19 Section 8B.28 of the MUTCD contains information regarding the use of stop lines and yield lines at grade crossings.

Figure 3B-17(VA). Examples of Stop Lines at Unsignalized Midblock Crosswalks



3.6 - Section 7B.11 School Advance Crossing Assembly

Revise Section 7B.11 as shown below:


Standard:

- 01 The School Advance Crossing assembly (see [Figure 7B-1\(VA\) in this Supplement](#)) shall consist of a School (S1-1) sign supplemented with an AHEAD (W16-9P) plaque or an XX FEET (W16-2P or W16-2aP) plaque.
- 02 Except as provided in Paragraph 3, a School Advance Crossing assembly shall be used in advance (see Table 2C-4 for advance placement guidelines) of the first School Crossing assembly (see [Section 7B.12 of this Supplement](#)) that is encountered in each direction as traffic approaches a school crosswalk (see Figure 7B-4).

Table 7B-1 (VA). School Area Sign and Plaque Sizes

Sign	Sign Designation	Section	Conventional Road	Minimum	Oversized
School	S1-1	7B.08	36 x 36	30 x 30	48 x 48
School Bus Stop Ahead	S3-1	7B.13	36 x 36	30 x 30	48 x 48
School Bus Turn Ahead	S3-2	7B.14	36 x 36	30 x 30	48 x 48
Reduced School Speed Limit Ahead	S4-5, S4-5a	7B.16	36 x 36	30 x 30	48 x 48
School Speed Limit XX When Flashing	S5-1	7B.15	24 x 48	—	36 x 72
End School Zone	S5-2	7B.09	24 x 30	—	36 x 48
End School Speed Limit	S5-3	7B.15	24 x 30	—	36 x 48
In-Street Ped Crossing	R1-6 , R1-6a , R1-6b , R1-6c	7B.11, 7B.12	12 x 36	—	—
Speed Limit (School Use)	R2-1	7B.15	24 x 30	—	36 x 48
Begin Higher Fines Zone	R2-10	7B.10	24 x 30	—	36 x 48
End Higher Fines Zone	R2-11	7B.10	24 x 30	—	36 x 48
X:XX to X:XX AM X:XX to X:XX PM	S4-1P	7B.15	24 x 10	—	36 x 18
When Children Are Present	S4-2P	7B.15	24 x 10	—	36 x 18
School	S4-3P	7B.09, 7B.15	24 x 8	—	36 x 12
When Flashing	S4-4P	7B.15	24 x 10		

Table 7B-1 (VA). School Area Sign and Plaque Sizes

Sign	Sign Designation	Section	Conventional Road	Minimum	Oversized
Mon-Fri	S4-6P	7B.15	24 x 10	—	36 x 18
All Year	S4-7P	7B.09	24 x 12	—	30 x 18
Fines Higher	R2-6P	7B.10	24 x 18	—	36 x 24
XX Feet	W16-2P	7B.08	24 x 18	—	30 x 24
XX Ft	W16-2aP	7B.08	24 x 12	—	30 x 18
Turn Arrow	W16-5P	7B.08, 7B.09, 7B.11	24 x 12	—	30 x 18
Advance Turn Arrow	W16-6P	7B.08, 7B.09, 7B.11	24 x 12	—	30 x 18
Diagonal Arrow	W16-7P	7B.12	24 x 12	—	30 x 18
Diagonal Arrow (optional size)	W16-7P	7B.12	21 x 15	—	—
Ahead	W16-9P	7B.11	24 x 12	—	30 x 18
 Virginia Specific Signs					
STATE LAW STOP FOR SCHOOL BUS LOADING OR UNLOADING CHILDREN	S0-V1	7B.17	48 x 48	—	—

- Note:
1. Larger sizes may be used when appropriate
 2. Dimensions are shown in inches and are shown as width x height
 3. Minimum sign sizes for multi-lane conventional roads shall be as shown in the Conventional Road column

Option:

- 03 The School Advance Crossing assembly may be omitted (see Figure 7B-5) where a School Zone (S1-1) sign (see [Section 7B.09 of the MUTCD](#)) is installed to identify the beginning of a school zone in advance of the School Crossing assembly.
- 04 If a school crosswalk is located on a cross street in close proximity to an intersection, a School Advance Crossing assembly with a supplemental arrow (W16-5P or W16-6P) plaque may be installed on each approach of the street or highway to warn road users making a turn onto the cross street that they will encounter a school crosswalk soon after making the turn.



- 05 A 12-inch reduced size in-street School (S1-1) sign (see [Figure 7B-6\(VA\) in this Supplement](#)), installed in compliance with the mounting height and special mounting support requirements for In-Street Pedestrian Crossing ([R1-6a](#)) signs (see [Section 2B.12 of this Supplement](#)), may be used in advance of a school crossing to supplement the post-mounted school warning signs. A 12 x 6-inch reduced size AHEAD (W16-9P) plaque may be mounted below the reduced size in-street School (S1-1) sign.

Support:

- 06 The Code of Virginia § 46.2-924 requires that drivers at crosswalks stop for ~~yield the right-of-way to~~ pedestrians crossing the highway except at intersections and crosswalks where the movement of traffic is being regulated by law-enforcement officers or traffic control devices – the driver shall yield according to the law-enforcement officer or traffic control device at such locations. Refer to Section 2B.53 in this Supplement for signs used at traffic signals, including the TURNING VEHICLES YIELD TO PEDESTRIANS (R10-15) sign. The Standard statement in Section 2B.12 of the National MUTCD permits the use of the Stop for Pedestrians (R1-6a and R1-9a) signs ~~only~~ if state law specifically requires the driver to stop for a pedestrian in a crosswalk. As The Code of Virginia ~~does not require~~ requires a driver to stop, the ~~R1-6a and R1-9a~~ R1-6 and R1-9 signs cannot be utilized.

Standard:

- 07 ~~The R1-6a~~ R1-6 In Street Pedestrian Crossing sign shall not be used (see [Section 2B.12 of this Supplement](#)).

Option:

- 08 If used, the ~~R1-6~~ R1-6a In Street Pedestrian Crossing sign may omit the legend STATE LAW (see [Section 2B.12 of this Supplement](#)).

3.7 - [Section 7B.12 School Crossing Assembly](#)

Revise Section 7B.12 as shown below:

Standard:

- 01 **If used, the School Crossing assembly (see [Figure 7B-1\(VA\) in this Supplement](#)) shall be installed at the school crossing (see [Figures 7B-4 and 7B-5](#)), or as close to it as possible, and shall consist of a School (S1-1) sign supplemented with a diagonal downward pointing arrow (W16-7P) plaque to show the location of the crossing.**
- 02 **The School Crossing assembly shall not be used at crossings other than those adjacent to schools and those on established school pedestrian routes.**
- 03 **The School Crossing assembly shall not be installed on approaches controlled by a STOP or YIELD sign.**

Option:

- 04 The In-Street Pedestrian Crossing (~~R1-6a~~ R1-6) sign (see [Section 2B.12 of this Supplement](#) and [Figure 7B-6\(VA\) in this Supplement](#)) or the In-Street Schoolchildren Crossing (~~R1-6c~~ R1-



6b) sign (see Figure 7B-6(VA) in this Supplement) may be used at unsignalized school crossings. If used at a school crossing, a 12 x 4-inch SCHOOL (S4-3P) plaque (see Figure 7B-6(VA) in this Supplement) may be mounted above the sign. The STATE LAW legend on the R1-6a and R1-6c ~~R1-6 and R1-6b~~ signs may be omitted.

Support:

- 05 The Code of Virginia § 46.2-924 requires that drivers at crosswalks stop for ~~yield the right-of-way to~~ pedestrians crossing the highway except at intersections and crosswalks where the movement of traffic is being regulated by law-enforcement officers or traffic control devices – the driver shall yield according to the law-enforcement officer or traffic control device at such locations. Refer to Section 2B.53 in this Supplement for signs used at traffic signals, including the TURNING VEHICLES YIELD TO PEDESTRIANS (R10-15) sign. The Standard statement in Section 2B.12 of the National MUTCD permits the use of the Stop for Pedestrians (R1-6a) signs ~~only~~ if state law specifically requires the driver to stop for a pedestrian in a crosswalk. As The Code of Virginia ~~does not require~~ requires a driver to stop, the ~~R1-6a and R1-6c~~ R1-6 and R1-6b signs cannot be utilized.

Standard:

- 06 ~~The R1-6a R1-6 In Street Pedestrian Crossing and R1-6b R1-6c In-Street Schoolchildren Crossing signs shall not be used (see Section 2B.12 of this Supplement).~~

Option:

- 07 A 12-inch reduced size in-street School (S1-1) sign (see Figure 7B-6(VA) in this Supplement) may be used at an unsignalized school crossing instead of the In-Street Pedestrian Crossing (R1-6a) or the In-Street Schoolchildren Crossing (R1-6c) sign. A 12 x 6-inch reduced size diagonal downward pointing arrow (W16-7P) plaque may be mounted below the reduced size in-street School (S1-1) sign.

Standard:

- 08 **If an In-Street Pedestrian Crossing sign, an In-Street Schoolchildren Crossing sign, or a reduced size in-street School (S1-1) sign is placed in the roadway, the sign support shall comply with the mounting height and special mounting support requirements for In-Street Pedestrian Crossing (~~R1-6~~ R1-6a) signs (see Section 2B.12 of this Supplement).**
- 09 **The In-Street Pedestrian Crossing sign, the In-Street Schoolchildren Crossing sign, the Overhead Pedestrian Crossing sign, and the reduced size in-street School (S1-1) sign shall not be used at signalized locations.**

Figure 7B-6(VA). In-Street Signs in School Areas

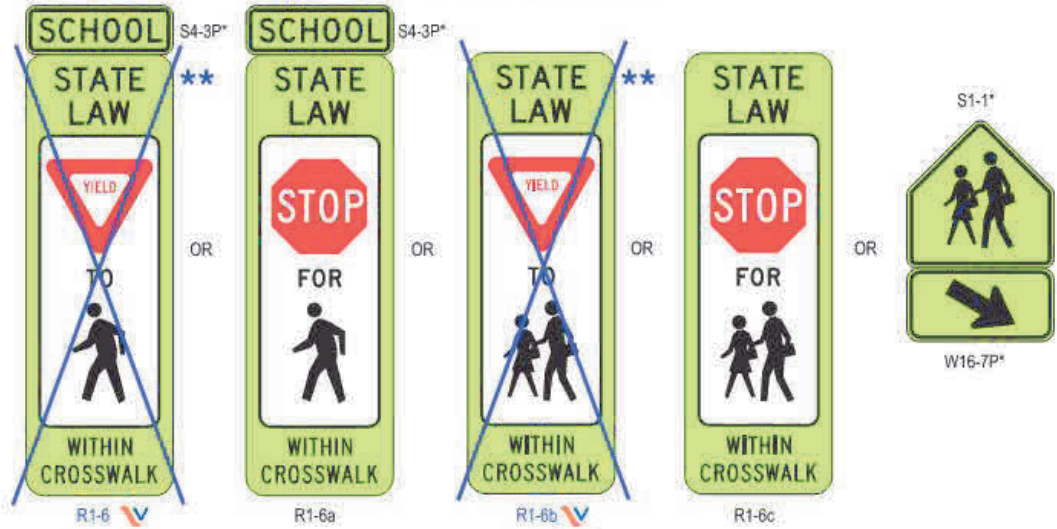
A - In advance of the school crossing




* Reduced size signs:

S1-1	12 x 12 inches
S4-3P	12 x 4 inches
W16-7P	12 x 6 inches
W16-9P	12 x 6 inches

B - At the school crossing



Notes:

1. The use of the STATE LAW legend is optional on the R1-6 series signs (see Section 7B.12).
 2. The use of the SCHOOL plaque above the R1-6 and R1-6a signs is optional.
- ** The R1-6 and R1-6b signs shall not be used in Virginia, as the Virginia code requires drivers to stop for pedestrians 

4.0 REFERENCES

- [2009 Manual on Uniform Traffic Control Devices](#)
- [2011 Virginia Supplement to the Manual on Uniform Traffic Control Devices, Revision 1](#)
- Code of Virginia §46.2-924